

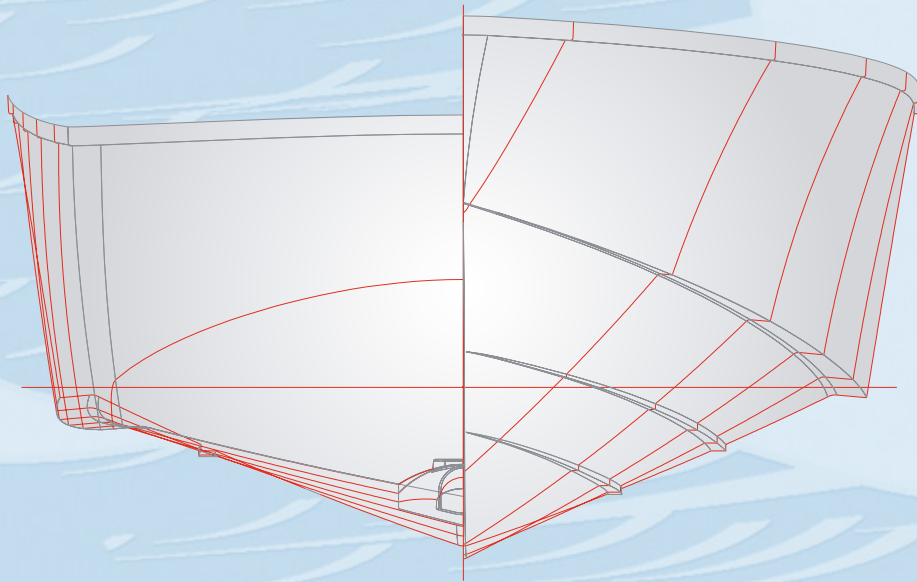
BACK COVE 26

A DOWNEAST TRADITION



DESIGN CONCEPT

Spirited, beautiful and seaworthy, the Back Cove 26 is a joy to operate and a pleasure to own. She will cruise at 25 knots with her standard four cylinder diesel engine. Fuel economy is extraordinary throughout her speed range. At 20 knots the Back Cove 26 can cruise for over 265 nautical miles at a cost almost 50% lower than most gasoline powered vessels. A standard bow thruster is provided to facilitate low speed maneuvers. Downward turning spray rails and wide chines increase stability, keeping the boat dry in a seaway, and assisting her hull onto the plane. Sight lines from the helm are excellent.



The style and grace of the Maine lobster boat has long been admired by boating enthusiasts throughout the world. No builder blends the classical looks with modern construction better than Back Cove Yachts.

INTERIOR

The interior accommodation of the Back Cove 26 is bright and airy. Finished in hand-varnished American cherry, her interior joinery is finely built. This space is warm, welcoming and gives a sense of luxury.



A vee-berth with drop-down, inlaid table, sleeps two comfortably.



Her fully enclosed head compartment with full privacy door, vanity and sink makes the accommodations of other boats in this size range seem inadequate.

Her galley includes a 120V AC/12 VDC fridge, stainless steel sink, microwave oven and cooktop for meal preparation.



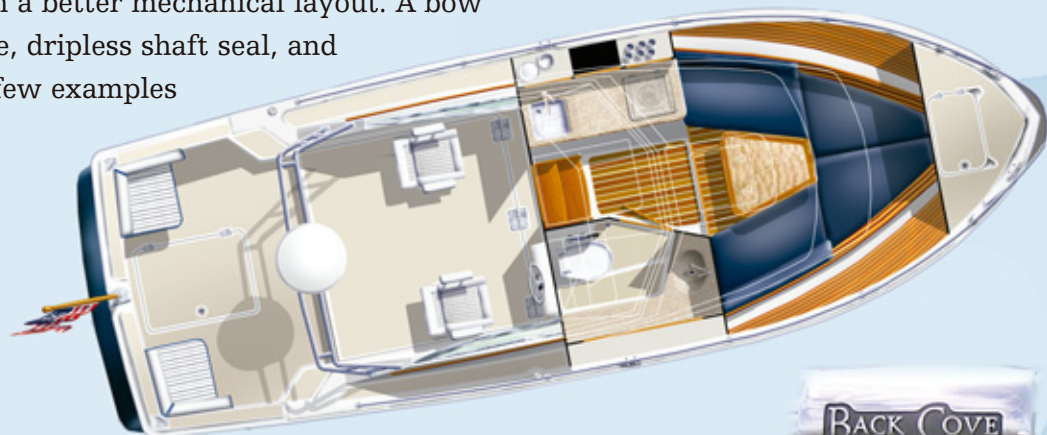


Comfortable captain and mate's seats are mounted on the helm deck at just the right height for the safest and best view of the waters ahead and around the yacht. Her large helm pod is sized to suit a good array of navigational electronics. A generous aft cockpit, with a storage lazarette below, offers comfortable coamings for fishing and plenty of space for socializing with friends and family when the optional aft cockpit seating is selected.



Engine access could not be better. Her entire helm deck rises on gas shocks to reveal all of the engine service points and the mechanical and electrical ship's systems. No other yacht in this class can claim a better mechanical layout. A bow thruster, diesel engine, dripless shaft seal, and zinc saver, are but a few examples of the standard equipment found aboard the Back Cove 26.

She is a standout in any harbor.



SPECIFICATIONS

LOA	26'6" (8.15M)	Fuel capacity	100 US Gals (455L)
Beam	9'4" (2.87M)	Water tankage	30 US Gals (136L)
Draft	2'6" (.77M)	Holding tank	30 US Gals (136L)
Deadrise at transom	14 degrees	Headroom in cabin	5'7" (1.72M)
Displacement est. full load ..	8500 lbs (3864 kg)	Built to NMMA, CE, ABYC and USCG standards	